

[View this email in your browser](#)



Welcome to the Southwest Environmental Health Sciences Center Newsletter! This edition is packed with updates on new members, award recipients, staff updates, research highlights, event recaps, and more! Join us on this journey as we share successes in environmental health research and its impact on the community.

OUR TEAM



Community Engagement Core (CEC)

As we wrap up another fantastic summer, we want to extend a heartfelt thank you to all of our dedicated staff. Your hard work, enthusiasm, and commitment have made a significant impact at the SWEHSC CEC and were crucial to the success of this season.

A special thanks goes to our temporary summer staff—Fabiola Urrea Salazar, Jackie Larson, Clay Begay, Jasmine Lopez, and Samirah Villanueva. Your contributions were invaluable, and we wish you all the best as you move on to new opportunities. We hope our paths cross again in the future. Thank you once again for everything!

[Our Team](#)



New to SWEHSC

Let's give a warm welcome to our newest member, Dr. Melissa Herbst-Kralovetz! We're thrilled to have her on board and can't wait to see the amazing things she'll bring to our center.

[View Profile](#)

HONORS & AWARDS



Center member's \$1.5M grant will build global network to prevent exploitation of Indigenous data

With a \$1.5 million grant, Dr. Russo Carroll and researchers aim to globally connect Indigenous Data Sovereignty advocates for data safeguarding.

[Full Article](#)



Dr. Leslie Farland named 2024 Udall Center Fellow

Dr. Leslie Farland was one of six distinguished professors named 2024 - 2025 Udall Center Fellows.

[Full Article](#)



Dr. Ladd Keith will lead UA involvement with a new federally funded center

Dr. Ladd Keith, a Center member, will lead the University's participation in the Center for Heat Resilient Communities, focusing on translating extreme heat research. Dr. Russo Carroll will also be assisting with the new center.

[Full Article](#)

SWEHSC MEMBER GRANTS & PROMOTIONS

Members Promoted to Professor

- [Tara Carr, MD](#) - College of Medicine

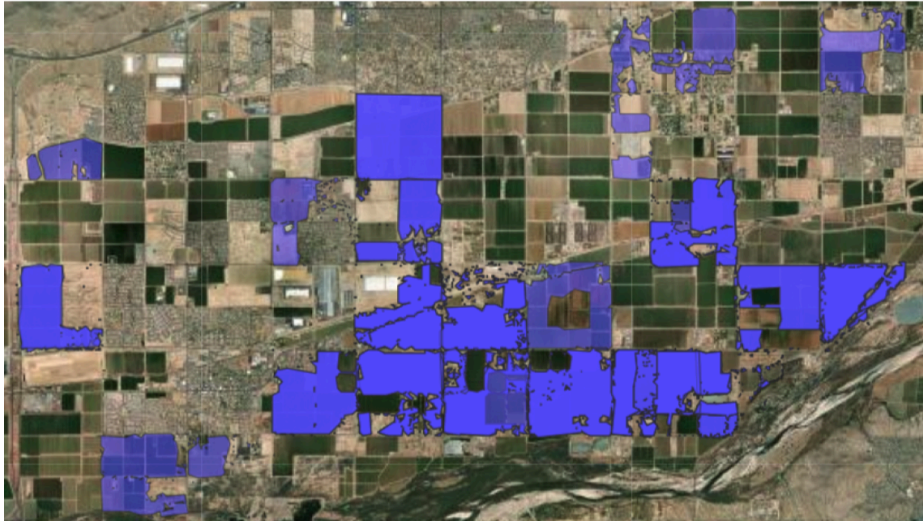
Members Promoted to Associate Professor

- [Frank Duca, PhD](#) - Animal & Comparative Biomedical Sciences
- [Ladd Keith, PhD](#) - College of Architecture, Planning & Landscape Architecture
- [Jianqin Lu, PhD](#) - R. Ken Coit College of Pharmacy
- [Aikseng Ooi, PhD](#) - R. Ken Coit College of Pharmacy

Additional grants awarded to SWEHSC members include:

- [Scott Boitano, PhD](#) has been awarded grants from the National Institute of Allergy and Infectious Disease and PARmedics Inc to further research on asthma treatments
- [Ashley Lowe, PhD](#) has been awarded grants from the University of Arizona Foundation and Arizona State University to advance stock inhaler programs in schools and evaluate school safety and comprehensive wellness programs
- [Stefano Guerra, MD, PhD](#) has been awarded grants from the National Institute of Allergy and Infectious Disease to study the role of creatinine kinase is asthma
- [Jefferey Burgess, MD](#) has been awarded a grant from University of Michigan to assess markers of toxicity in firefighters

RESEARCH HIGHLIGHTS



Significant Associations Between Pesticide Exposure and Stillbirth Risk

A recent study conducted by Drs. Melissa Furlong and Paloma Beamer from the Zuckerman College of Public Health investigated the association between pesticide exposure during pregnancy and the risk of stillbirth. The study, which utilized data from the Arizona Pesticide Use Registry alongside birth certificate data in the state, aimed to assess the impact of various pesticide exposures on stillbirth risk. Stillborn babies have died in the womb before they are born.

[Full Summary](#)



Drinking Chlorinated Tap Water May Alter Gut Bacterial Composition

A recent study by Drs. Georg Wondrak and Frank Duca explored the effects of drinking chlorinated water on mouse gut microbiota. Their findings revealed a decline in fecal microbiota diversity and notable shifts in fecal bacterial composition. With potential public health implications for humans, these results underscore the need for further research in human subjects.

[Full Summary](#)



Continuation of Asthma Birth Cohort Study

Center members at the University of Arizona Health Sciences are committed to improving lung health through continuing the Tucson Children’s Respiratory Study, a 40-year-plus birth cohort, at the Asthma and Airway Disease Research Center.

[Full Summary](#)



A New Fish Lab Was Established To Help Spawn Human Health Discoveries

Dr. Frank von Hippel, a member of the Center, manages a lab dedicated to three spine stickleback fish. His belief is that this work could foster new research collaborations and contribute to advancements in human health.

[Full Summary](#)

COMMUNITY IMPACT



Fun in the Sun: A Look Back at SWEHSC CEC’s Summer Programs

Core (CEC) had an exciting and impactful summer! Across our five diverse programs, students from middle school to community college explored environmental health and gained valuable professional development skills. Spanning one to four weeks, these programs offered students a rich array of resources and hands-on activities on campus and in the community.

[Full Summary](#)



Navajo Nation, University of Arizona strengthen public health collaboration with MOU

Navajo Nation President Buu Nygren, alongside key representatives from the Navajo Department of Health and the Navajo Epidemiology Center, signed an MOU on Monday, August 5th with the University of Arizona to collaborate on data related to COVID-19 infections.

[Full Article](#)

MORE PUBLICATIONS

[Dr. Ernst provides insights into Lyme disease transmission patterns within the Northeastern United States.](#)

[Dr. Craig assists in an analysis of mouse ovarian antral follicles.](#)

[Dr. Farland and Dr. Herbst-Kralovetz contribute to research surrounding genital inflammation in chronic pelvic pain.](#)

[Dr. Ding assists in research regarding lung disease susceptibility in relation to environmental exposures.](#)

[Dr. Duca aids in research surrounding the role of gut microbiota in diabetes.](#)

OPPORTUNITIES & EVENTS



WEST ENVIRONMENTAL JUSTICE CENTER
AZ, CA, HI, NV & USAPI

Community Champions

The WEST Environmental Justice Center Community Champions program is now accepting applications! This program is designed to build upon local knowledge and

Internship Opportunities

Are you passionate about making a positive impact in your community? Do you want to gain hands-on experience in your field of interest, boost your skills and expand your

[Subscribe](#)

[Past Issues](#)

[Translate](#) ▼

[RSS](#)

learning through a cohort approach tailored to participants' interests and focused on shared learning. Cohort members will be selected from Arizona, California, Hawai'i, Nevada, and the US Affiliated Pacific Islands, including Native American Tribes and Indigenous communities in these regions. Deadline to apply is October 4.

[Learn More](#)

applications!

Work a minimum of 180 hours and receive \$5,000 for completion of your internship. You can choose a full-time or part-time internship whether that is on-site, remote or hybrid. Student internships should serve Arizona, California, Hawai'i, Nevada, or the US Affiliated Pacific Islands, including Native American Tribes and Indigenous communities in these areas.

[Learn More](#)

SWEHSC Pilot Project Application Coming Soon!

We are excited to announce that the application for pilot projects will be available on our website starting Monday, September 16. For more details and to apply, please visit the [Pilot Projects Page](#).

Stay tuned for more updates!



Have an event, grant, publication, or highlight you'd like featured in our newsletter? Submit to: swehsc-comms@pharmacy.arizona.edu

We respectfully acknowledge the University of Arizona is on the land and territories of Indigenous peoples. Today, Arizona is home to 22 federally recognized tribes, with Tucson being home to the O'odham and the Yaqui. Committed to diversity and inclusion, the University strives to build sustainable relationships with sovereign Native Nations and Indigenous communities through education offerings, partnerships, and community service.

Want to change how you receive these emails?
You can [update your preferences](#) or [unsubscribe](#)